



PIPE

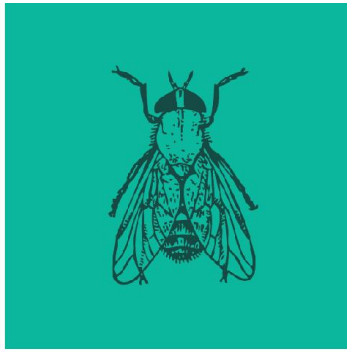
- Extra Light
 - Light
- Medium
- Heavy
- X-Heavy

Black & Galvanized

AUSTRALIAN STANDARDS

- Grade C250 Pipe is manufactured and tested to comply with the requirements of the following specifications:
- AS 1074:1989 - Steel tubes and tubulars for ordinary service.
- AS/NZS 1163:2009 - Structural steel hollow sections (Grade C250, C250LO).
- AS/NZS 4792 - Hot-dipped galvanised coating on ferrous hollow sections. Applied by a continuous or a specialised process.

NOMINAL BORE SIZE (NB)	OUTSIDE DIAMETER (MM)	WALL THICKNESS (MM)	LENGTHS/ BUNDLE 6.5M	DESCRIPTION	BLACK KG/PM	GAL KG/PM
8	13.5	2.3		MEDIUM	0.641	-
10	17.2	2.3	217	MEDIUM	0.839	-
15	21.3	2.6	217	MEDIUM	1.20	1.22
		3.2		HEAVY	1.43	1.45
20	26.9	2.0	127	EXTRA LIGHT	1.23	1.28
		2.3		LIGHT	1.40	1.44
		2.6		MEDIUM	1.56	1.60
		3.2		HEAVY	1.87	1.92
25	33.7	2.0	91	EXTRA LIGHT	1.56	1.63
		2.6		LIGHT	1.99	2.05
		3.2		MEDIUM	2.41	2.46
		4.0		HEAVY	2.93	2.99
32	42.4	2.0	61	EXTRA LIGHT	1.99	2.07
		2.6		LIGHT	2.55	2.63
		3.2		MEDIUM	3.09	3.17
		4.0		HEAVY	3.79	3.86
40	48.3	2.3	61	EXTRA LIGHT	2.61	2.70
		2.9		LIGHT	3.25	3.33
		3.6		MEDIUM	3.56	3.64
		4.0		HEAVY	4.37	4.45
		4.9		X-HEAVY	5.71	-
50	60.3	2.3	37	EXTRA LIGHT	3.29	3.40
		2.9		LIGHT	4.11	4.21
		3.6		MEDIUM	5.03	5.14
		4.5		HEAVY	6.19	6.30



Wagga Wagga (02) 6971 8255
Bomen (02) 6921 9119
Deniliquin (03) 5881 5541
Coolamon (02) 6927 3024
Bega (02) 6494 7600

50	60.3	5.9	37	X-HEAVY	7.31	-
65	76.1	2.3	37	EXTRA LIGHT	4.19	4.32
		3.2		LIGHT	5.75	5.89
		3.6		MEDIUM	6.44	6.57
		4.5		HEAVY	7.95	8.08
		5.9		X-HEAVY	10.2	-
80	88.9	2.6	19	EXTRA LIGHT	5.53	5.70
		3.2		LIGHT	6.76	6.93
		4.0		MEDIUM	8.38	8.54
		4.9		HEAVY	10.3	10.6
		5.9		X-HEAVY	12.1	-
90	101.6	2.6	19	EXTRA LIGHT	6.35	6.53
		3.2		LIGHT	7.77	7.95
		4.0		MEDIUM	9.63	9.81
		4.9		HEAVY	11.9	12.2
100	114.1	3.2	19	EXTRA LIGHT	8.77	8.98
		3.6		LIGHT	9.83	10.0
100	114.1	4.5	19	MEDIUM	12.2	12.4
		5.4		HEAVY	14.5	14.7
125	139.7	3.0	13	EXTRA LIGHT	10.1	10.4
		3.5		LIGHT	11.8	12.0
		4.9		MEDIUM	16.6	16.9
		5.4		HEAVY	17.9	18.1
150	165.1	3.0	10	EXTRA LIGHT	12.0	12.3
		3.5		LIGHT	13.9	14.3
		4.9		MEDIUM	19.7	20.0
		5.4		HEAVY	21.3	21.6

STANDARD PIPE COLOUR CODES

Extra Light - Green

Light - Yellow

Medium - Blue

Heavy - Red

Extra Light - White

Steel Supplies can provide the following processing services for this product:

- Pack Cutting

