

Wagga Wagga	(02) 6971 8255
Bomen	(02) 6921 9119
Deniliquin	(03) 5881 5541
Coolamon	(02) 6927 3024
Bega	(02) 6494 7600

## LINE PIPE & ERW SECTIONS

### AUSTRALIAN PIPE SPECIFICATIONS

Pipe used in Australia and New Zealand is almost exclusively specified to American standards; carbon steel “hollow sections” are additionally specified to AS/NZS 1163. The usual specifications are...

**ASTM A53M** standard ERW welded carbon steel pipe

**ASTM A106M** standard seamless carbon steel pipe

**ASTM A333M** seamless and welded carbon steel pipe for low temperature service

**ASTM A358M** larger diameter welded stainless steel pipe

**ASTM A790M** welded and seamless duplex stainless steel pipe

**API 5L / ISO 3183** carbon steel line pipe for the petroleum and natural gas industries

**AS/NZS 1163** carbon steel structural steel “hollow sections”

The American standards all refer to ASME B36.10M or ASME B36.19M for nominal dimensions of carbon steel and stainless steel respectively, but dimensional tolerances are in the ASTM or API standards.

### Formula to attain approximate mass in kilograms per metre (kg/m) for Steel Round Pipe and Tubing

$$M = (D - t) t \times 0.02466$$

Where: **m** = mass to the nearest 0.01kg/m

**D** = Outside Diameter in millimetres.

(To nearest 0.1mm for OD up to 406.4mm)

(To nearest 1.0mm for OD 457mm and above)

**t** = Wall Thickness to the nearest 0.01mm

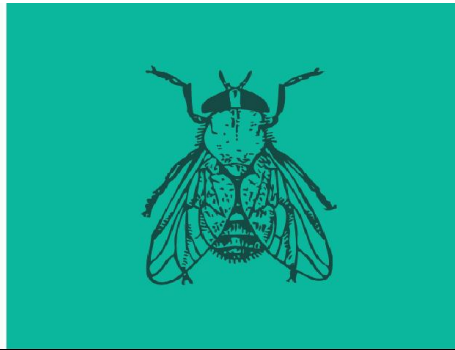
**Example:**

**Step 1.**  $323.9 - 9.53 = 314.37$

**Step 2.**  $314.37 \times 9.53 = 2995.9461$

**Step 3.**  $2995.9461 \times 0.02466$

**=73.88kg/m**



Wagga Wagga (02) 6971 8255  
 Bomen (02) 6921 9119  
 Deniliquin (03) 5881 5541  
 Coolamon (02) 6927 3024  
 Bega (02) 6494 7600

Nominal Size		O.D	Nominal Wall Thickness & Weight for Welded & Seamless Steel										Dimensions (mm)				Weight (kg/m)
DN	NPS	MM	STD	EXTRA STRONG	XX STRONG	SCHED. 10	SCHED. 20	SCHED. 30	SCHED. 40	SCHED. 60	SCHED. 80	SCHED. 100	SCHED. 120	SCHED. 140	SCHED. 160		
6	1/8	10.3	1.73 <b>0.37</b>	2.41 <b>0.47</b>					1.73 <b>0.37</b>		2.41 <b>0.47</b>						
8	¼	13.7	2.24 <b>0.63</b>	3.02 <b>0.80</b>					2.24 <b>0.63</b>		3.02 <b>0.80</b>						
10	3/8	17.1	2.31 <b>0.84</b>	3.20 <b>1.10</b>					2.31 <b>0.84</b>		3.20 <b>1.10</b>						
15	½	21.3	2.77 <b>1.27</b>	3.73 <b>1.62</b>	7.47 <b>2.55</b>				2.77 <b>1.27</b>		3.73 <b>1.62</b>				4.78 <b>1.95</b>		
20	¾	26.7	2.87 <b>1.69</b>	3.91 <b>2.20</b>	7.82 <b>3.64</b>				2.87 <b>1.69</b>		3.91 <b>2.20</b>				5.56 <b>2.90</b>		
25	1	33.4	3.38 <b>2.50</b>	4.55 <b>3.24</b>	9.09 <b>5.45</b>				3.38 <b>2.50</b>		4.55 <b>3.24</b>				6.35 <b>4.24</b>		
32	1-1/4	42.2	3.56 <b>3.39</b>	4.85 <b>4.47</b>	9.7 <b>7.77</b>				3.56 <b>3.39</b>		4.85 <b>4.47</b>				6.35 <b>5.61</b>		
40	1-1/2	48.3	3.68 <b>4.05</b>	5.08 <b>5.41</b>	10.15 <b>9.56</b>				3.68 <b>4.05</b>		5.08 <b>5.41</b>				7.14 <b>7.25</b>		
50	2	60.3	3.91 <b>5.44</b>	5.54 <b>7.48</b>	11.07 <b>13.44</b>				3.91 <b>5.44</b>		5.54 <b>7.48</b>				8.74 <b>11.11</b>		
65	2-1/2	73.0	5.16 <b>8.63</b>	7.01 <b>11.41</b>	14.02 <b>20.39</b>				5.16 <b>8.63</b>		7.01 <b>11.41</b>				9.53 <b>14.92</b>		
80	3	88.9	5.49 <b>11.29</b>	7.62 <b>15.27</b>	15.24 <b>27.67</b>				5.49 <b>11.29</b>		7.62 <b>15.27</b>				11.13 <b>21.35</b>		
90	3-1/2	101.6	5.74 <b>13.57</b>	8.08 <b>18.63</b>					5.74 <b>13.57</b>		8.08 <b>18.63</b>						
100	4	114.3	6.02 <b>16.07</b>	8.56 <b>22.32</b>	17.12 <b>41.03</b>				6.02 <b>16.07</b>		8.56 <b>22.32</b>		11.13 <b>28.32</b>		13.49 <b>33.54</b>		
125	5	141.3	6.55 <b>21.77</b>	9.53 <b>30.97</b>	19.05 <b>57.43</b>				6.55 <b>21.77</b>		9.53 <b>30.97</b>		12.7 <b>40.28</b>		15.88 <b>49.11</b>		

150	6	168.3	7.11 28.26	10.97 42.56	21.95 79.22				7.11 28.26		10.97 42.56		14.27 54.20		18.26 67.56
200	8	219.1	8.18 42.55	12.7 64.64	22.23 107.92		6.35 33.31	7.04 36.81	8.18 42.55	10.31 53.08		15.09 75.92	18.26 90.44	20.62 100.92	23.01 111.27
250	10	273.1	9.27 60.31	12.7 81.55	25.4 155.15		6.35 41.77	7.8 51.03	9.27 60.31	12.7 81.55	15.09 96.01	18.26 114.75	21.44 133.06	25.4 155.15	28.58 172.33
300	12	323.9	9.53 73.88	12.7 97.46	25.4 186.97		6.35 49.73	8.38 65.20	10.31 79.73	14.27 108.96	17.48 132.08	21.44 159.91	25.4 186.97	28.58 208.14	33.32 238.76
350	14	355.6	9.53 81.33	12.7 107.10		6.35 54.59	7.92 67.90	9.53 81.33	11.13 94.55	15.09 126.70	19.05 158.10	23.83 194.96	27.79 224.65	31.75 253.56	35.71 281.70
400	16	406.4	9.53 93.27	12.7 123.30		6.35 62.64	7.92 77.83	9.53 93.27	12.7 123.30	16.66 160.12	21.44 203.53	26.19 245.56	30.96 286.64	36.53 333.19	40.49 365.35
450	18	457	9.53 105.16	12.7 139.15		6.35 70.57	7.92 87.71	11.13 122.38	14.27 155.80	19.05 205.74	23.83 254.55	29.36 309.62	34.93 363.56	39.67 408.26	45.24 459.37
500	20	508	9.53 117.15	12.7 155.12		6.35 78.55	9.53 117.15	12.7 155.12	15.09 183.42	20.62 247.83	26.19 311.17	32.54 381.53	38.1 441.49	44.45 508.11	50.01 564.81
550	22	559	9.53 129.13	12.7 171.09		6.35 86.54	9.53 129.13	12.7 171.09		22.23 294.25	28.58 373.83	34.93 451.42	41.28 527.05	47.63 600.63	53.98 672.26
600	24	610	9.53 141.12	12.7 187.06		6.35 94.53	9.53 141.12	14.27 209.64	17.48 255.41	24.61 355.26	30.96 442.08	38.89 547.71	46.02 640.03	52.37 720.15	59.54 808.22
650	26	660	9.53 152.87	12.7 202.72		7.92 127.36	12.7 202.72								
700	28	711	9.53 164.85	12.7 218.69		7.92 137.32	12.7 218.69	15.88 271.21							
750	30	762	9.53 176.84	12.7 234.67		7.92 147.28	12.7 234.67	15.88 292.18							
800	32	813	9.53 188.82	12.7 250.64		7.92 157.24	12.7 250.64	15.88 312.15	17.48 342.91						
850	34	864	9.53 200.31	12.7 266.61		7.92 167.20	12.7 266.61	15.88 332.12	17.48 364.90						
900	36	914	9.53 212.56	12.7 282.27		7.92 176.96	12.7 282.27	15.88 351.7	19.05 420.42						
1050	42	1067	9.53 248.52	12.7 330.19											

Steel Supplies can provide the following processing services for this product:

- Larger sizes are available upon request
- Cutting